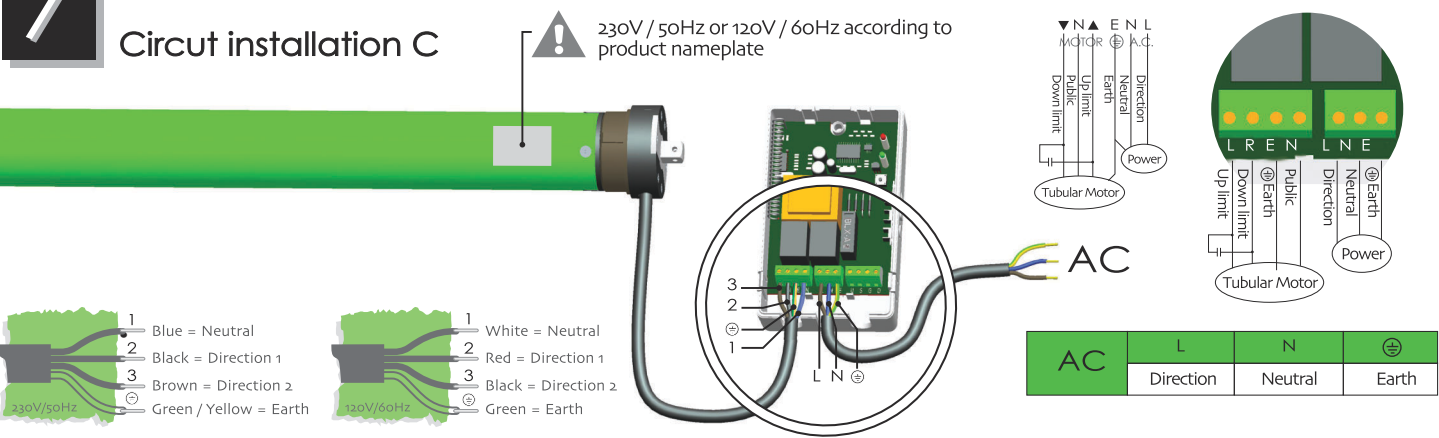


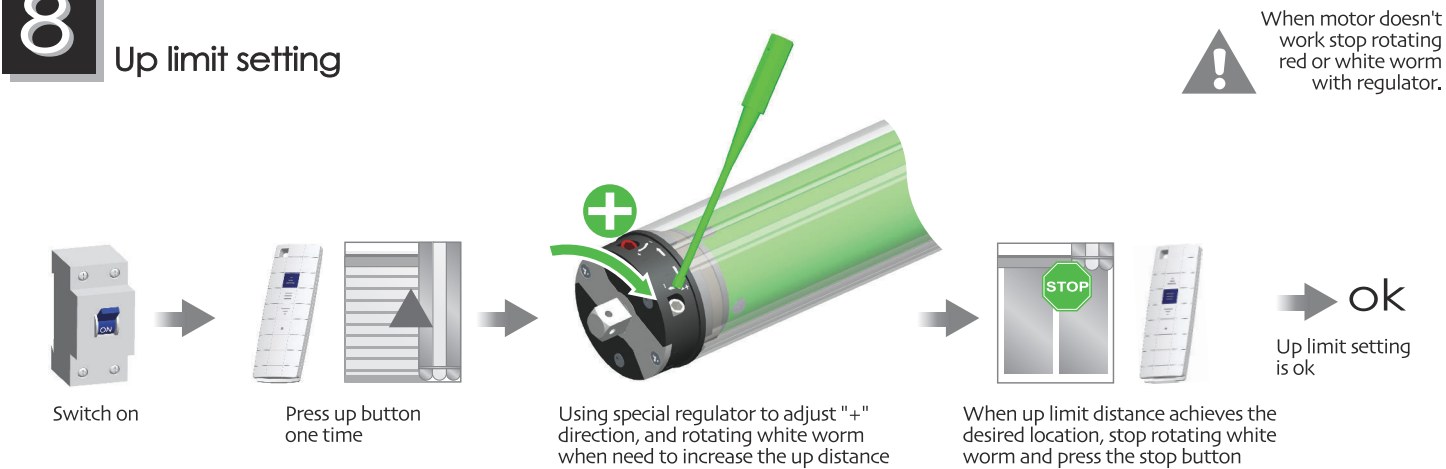
7

Circuit installation C



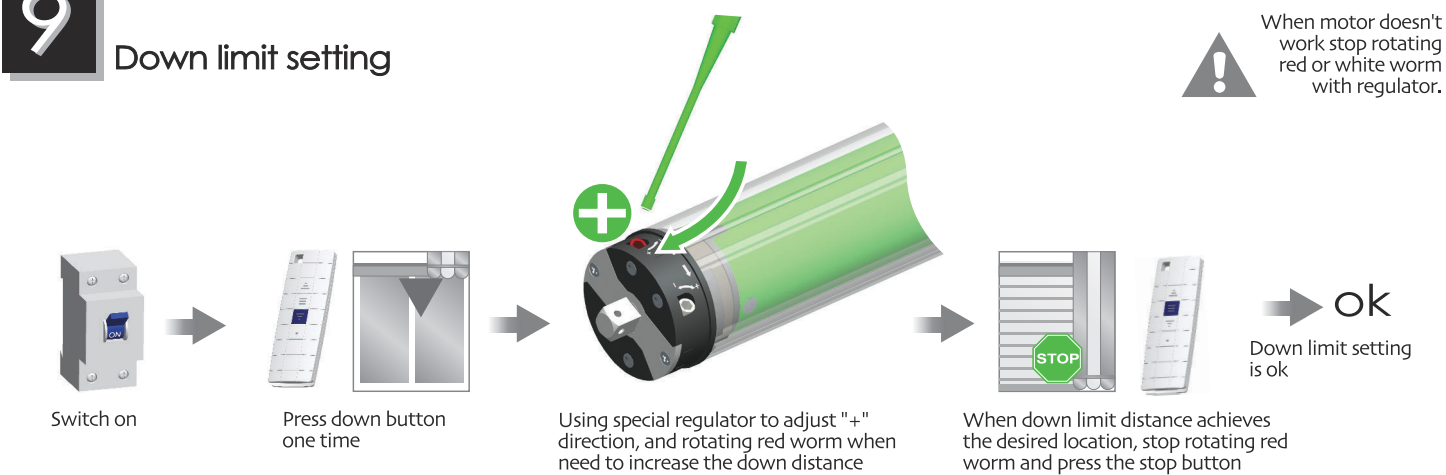
8

Up limit setting



9

Down limit setting



!

Attention

Common failures and solutions

	Fail-phenomena	Failure causes	solutions failure recovery
1	Press the upward button of the controller, the shutter move downward	Inside wire connecting of the controller is wrong	Exchange the position of black wire and brown wire
2	Switch on, the drive adapter runs in one-way operation	Inside limit switch of motor doesn't open	Crown running one circle in the opposite direction of the drive adapter, then it works
3	motor starts slowly or not work after connect power	a. Power voltage is slow b. Wiring error c. Overload d. Improper installation	a. Adjust power to rated data b. Check circuit and correct wiring connecting c. Rated torque associated with the installation of the load d. Re-install the motor
4	Motor stops suddenly after running	Motor stops suddenly after running	Motor will automatically resume work after 20 minutes cooling
5	Abnormal sound during roller blinds in operation	Outer tube is too long, led the rolling shutter connects with both sides of bracket too tightly	If idler is active, propering make the tube shorter to avoid too tight status.

Standard Tubular Motor Specification

S: Standard  
Mechanic Limit

By DM35S  
DM45S  
DM59S

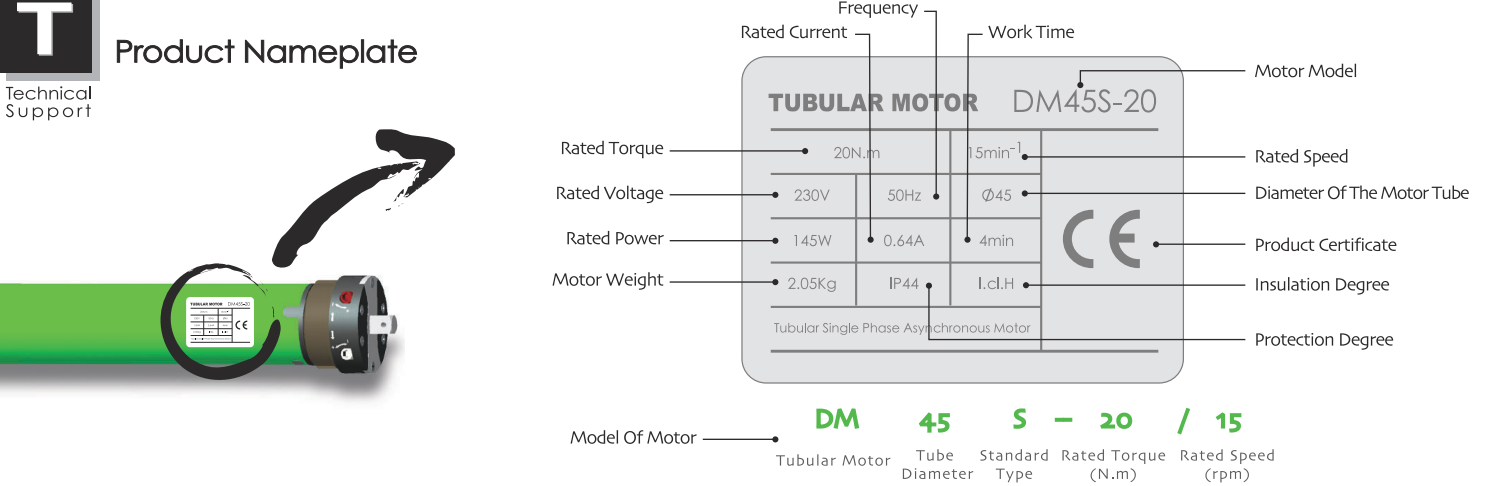
Version No. : A/01



T

Technical Support

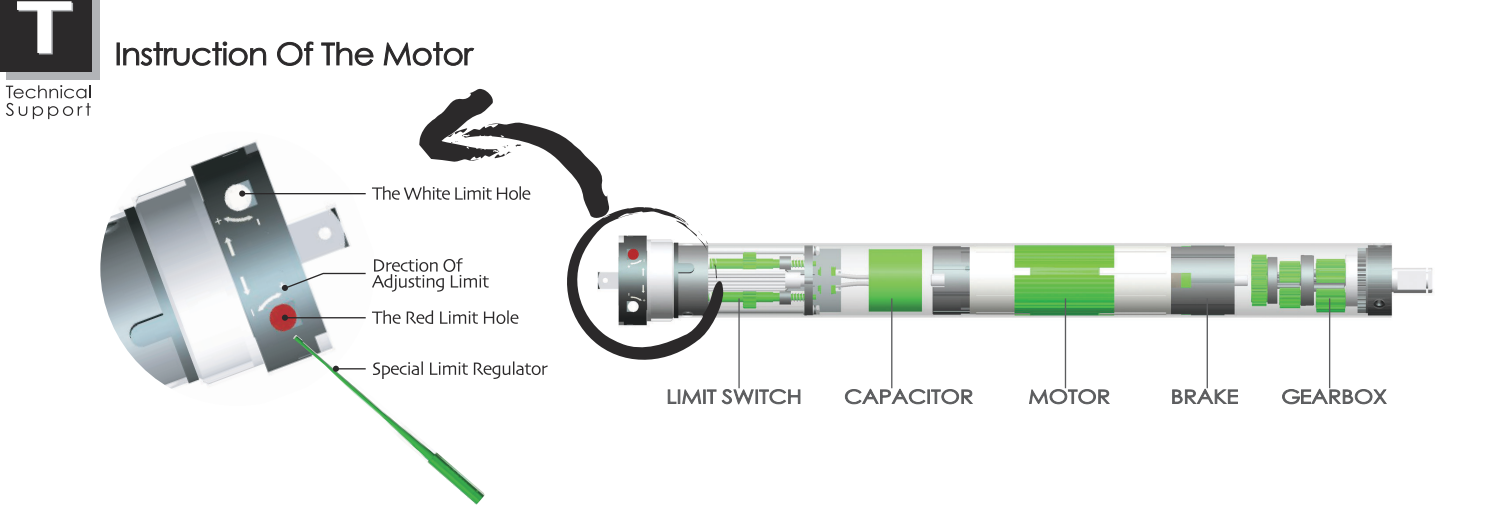
Product Nameplate



T

Technical Support

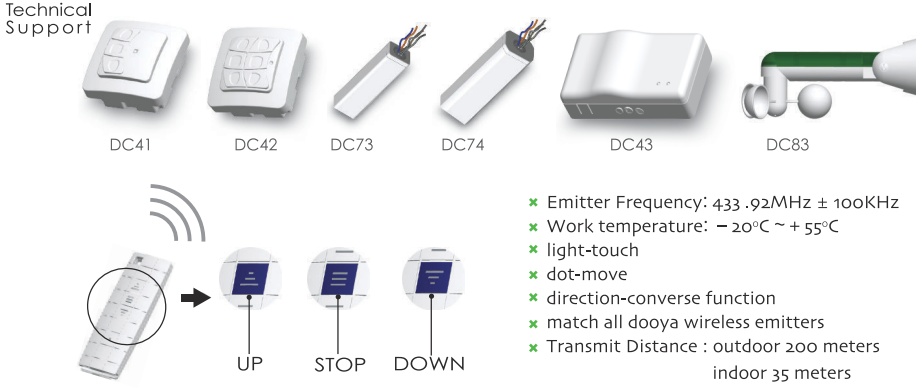
Instruction Of The Motor



A

Technical Support

Matchable Control System



Others Control System

